

Parameters

Electrical Parameters:

| | |
|-------------------|-------------|
| Power supply | 12-30V DC |
| Power consumption | 30mA/24V DC |

Environmental Conditions:

| | |
|---------------------------|------------|
| Working temperature | -5°~45°C |
| Working relative humidity | Up to 90% |
| Storage temperature | -20°~+60°C |
| Storage relative humidity | Up to 93% |

Approved:

CE, RoHS

Product Information:

| | |
|-------------------|--------------------------|
| LCD resolution | 160x80 |
| Dimensions | 86×116.5×10.5 (mm) |
| Net weight | 130.5(g) |
| Housing material | Glass/Aluminum , ABS, PC |
| Installation | US wall box |
| Protection rating | IP20 |

Important Notes

- It must work in conjunction with KP-POWER (installed in wall-box).
- PieroNet cable — 0.8mm single-core copper cable.
- PieroNet Connection — Series connection (hand-in-hand).
- Installation — US wall box.

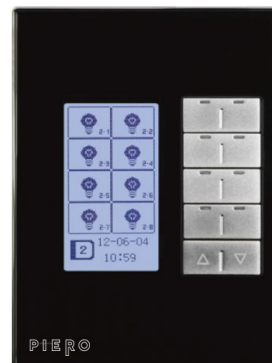
Installation Steps

- Connect PieroNet cables. Make sure the color of wire complies with the definition
- Make sure the PieroNet cable type is correct and has no short circuit.
- Mount the KP-POWER in the wall-box.
- Put this device into KP-POWER.

PieroNet Cable Guide

| CAT5/CAT5E | PieroNet |
|----------------------------|----------|
| Brown / Orange | 24V DC |
| Brown white / Orange white | COM |
| Blue white / Green white | DATA- |
| Blue/ Green | DATA+ |

Overview

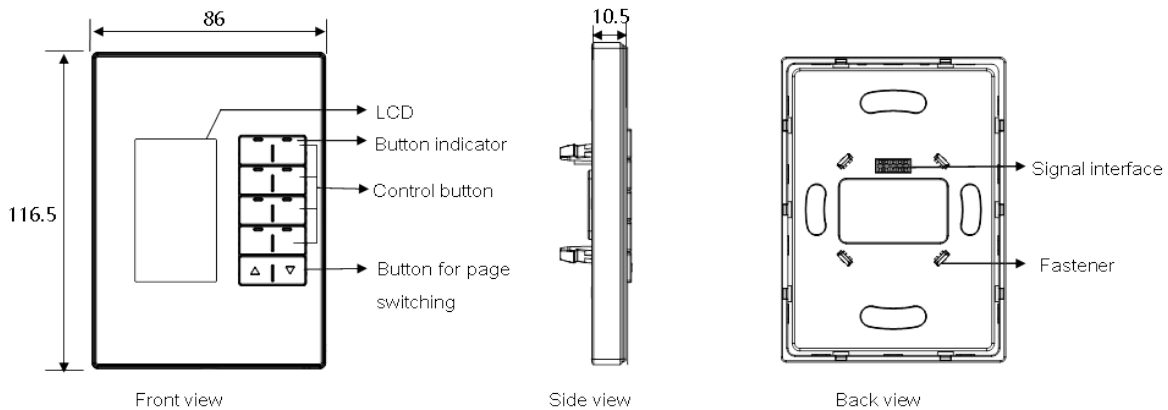


KP-LCD10 8-button multifunction LCD switch is a new generation of wall-mounted switch with new design. It has 8 control buttons and the left & right side of the button can be programmed separately. 2 buttons are used for the page switching. Each button can be displayed with an icon in the LCD screen, which is customized for terminal user.

Functions

- Adjustable LCD backlit and LED indicator.
- Specific page for Floor Heating, HVAC, Music.
- Icon for Key Buttons can be customized by users.
- Button combination and Double Button combination function available.
- Button mutual exclusion available.
- Upgrading online from PieroNet is available.
- Communication : PieroNet.

Dimensions and Wiring



LCD: Display icon, user can design icon from manage software.

Button Indicator: Indicates the status of the controlled target. On- Status on; Off- Status off. User can define the color of status.

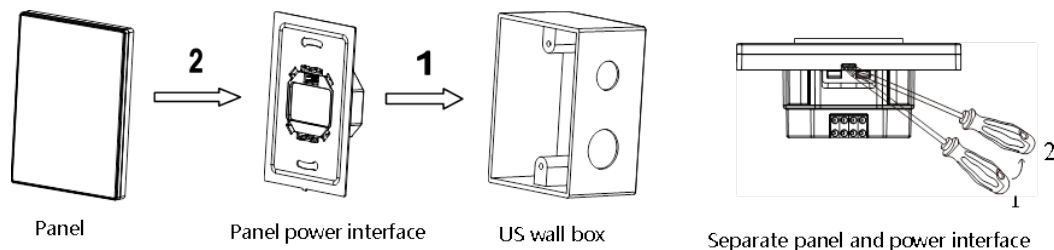
Control Button: To control target.

Button for page shifting: For user to select different pages.

Signal interface and fastener: Connect to panel power interface (KP-POWER).

Read and modify the address: Keep pressing the first row (button 1 or button 2) and the forth row (button 7 or button 8) to enter into the panel setting page. Choose the "SYSTEM", keep pressing the button 1 or button 2, you can modify the subnet ID and device ID. Other functions in this item are straightforward to set

Installation



Installation: Hold the edge of the panel (shown as above grey area), insert the power interface module vertically. Do not push the panel too hard.

Split: Insert a 2.5mm-screwdriver to the split gap, pry up from Position 1 to 2, then the wiring hole will open. Then separate the panel and power interface.

Safety Precautions



- The screw down strength should not exceed 0.1Nm
- Mounting position: indoor.
- Do not make wrong connection on PieroNet interface, it will damage the PieroNet interface of this module.
- Never let liquids get into the module, it will damage this device.
- Do not get AC power into PieroNet wire, it will damage all devices in the system.

Package Contents

- KP-LCD10, Datasheet x1